

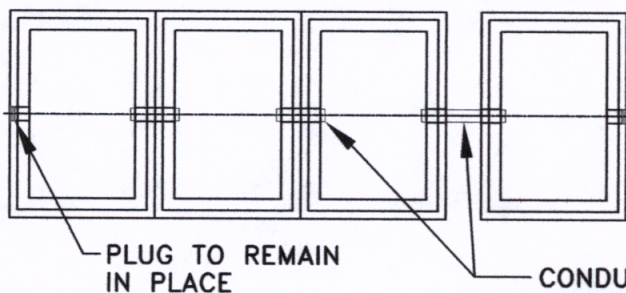
CONCRETE METER BOX AND PAD MUST BE A PREAPPROVED DESIGN. BRICK CONSTRUCTION MAY BE USED WITH PREAPPROVAL FROM METRO WATER SERVICES.

MXU TO BE INSTALLED IN MODIFIED CASTING COVER PER METRO WATER SERVICES PERMIT OFFICE. REF. DETAIL (WDET015 & WDET015B)

METER BOX TOP SECTION

NOTES:

- (A) 4500 PSI CONCRETE SHALL BE USED
- (B) ALL CONCRETE SIDEWALLS TO BE REINFORCED WITH 6x6x6 (6x6-W2.9xW2.9) WIRE MESH CENTERED.
- (C) 1-3/4" HOLE TO BE PLUGGED WITH MOCAP THICK, WIDE FLANGE TAPERED CAP OR APPROVED EQUAL.



SINGLE MXU FOR MULTIPLE METERS
RADIO READ TRANSCIVER UNIT (MXU) HAS TWO PORTS FOR CONNECTING METERS AND MULTIREAD MODULES. ANY COMBINATION OF METERS AND MULTIREAD MODULES CAN BE USED UP TO A MAXIMUM OF 16 METERS USING (2) 8-CHANNEL MULTIREAD MODULES FOR 2 MXU PORTS.

CONDUIT BETWEEN METER BOXES WITH 1-1/2" SCHEDULE 40 PVC PIPE LENGTH BETWEEN AS NEEDED WITH SILICONE CAULKING

MULTIREAD METER BOX ARRANGEMENT

METRO WATER SERVICES

METER BOX TOP SECTION AND
MULTIREAD BOX ARRANGEMENT

NOT TO SCALE DATE: 11/08/13

DWG. NO. WDET02A2



Hal Balubog
LICENSED DISTRIBUTION SYSTEM OPERATOR

Griff
DIRECTOR OF WATER AND SEWERAGE SERVICES